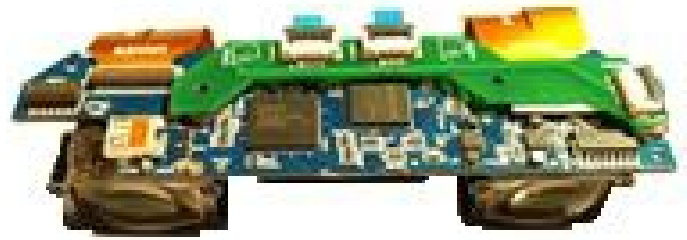


# 720P BINOCULAR DEVELOPMENT KIT



## Brief Description

The 720P Near to the Eye (NTE) Binocular Development Kit integrates two 720P HD LCoS panels with key electronic components to control and evaluate the 720P light panels in any of the given binocular engines.

The kit includes in addition to the 720P HD LCoS panels a LCOS driver board with the driving ASSP (IC), a binocular optical engine and software tools. With that the kit provides direct control of the 720P LCoS panels in the binocular engine. By integrating the panel drive electronics, a host video input and an illumination synchronization the development kit allows the user to quickly evaluate the 720p LCoS panels with any of the aspherical or free form binocular optical engines.

## Content

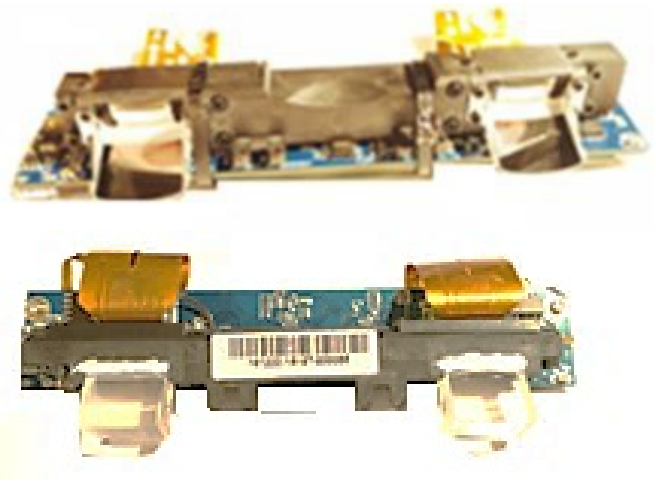
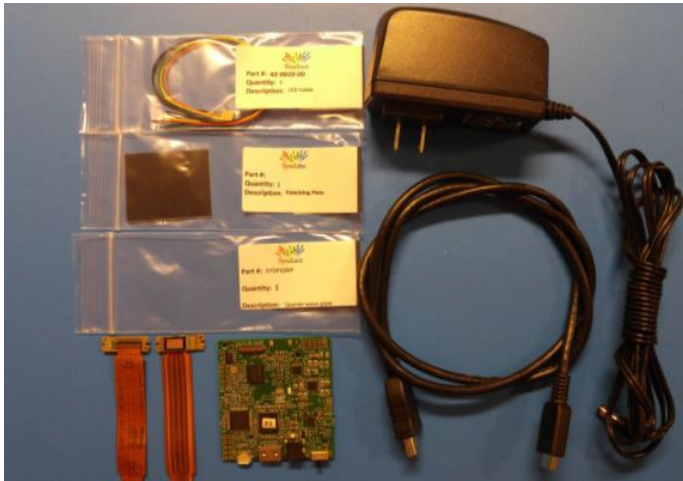
The 720P Near to the Eye (NTE) Binocular Development Kit includes the following components:

- 2D/3D binocular driver board with HDMI input
- Two 720P HD LCOS Panels
- Illumination Cables
- A custom made HDMI/Power Cable
- Two 75 mm flex to connect the panels
- One optical engine out of the following:
  - 720P binocular aspherical see through engine (above left)
  - 720P binocular aspherical immersive engine (above right)
  - 720P binocular free form see through engine (next page right upper part)
  - 720P binocular free form immersive engine (next page right lower part)

## Contact Information

Dresden Microdisplay GmbH  
Maria-Reiche-Str 2  
D-01109 Dresden

Info@Microdisplay.biz  
www.microdisplay.biz  
+49 (351) 41 88 97 60



## Development Kit w/o engine

In case no binocular optical engine is needed the development kit and also be ordered without the optical engine.

The development kit then comes with some additional components as listed below:

- The LCOS driver board with HDMI input
- Two 720P HD LCOS Panel(s)
- A 5V, 2.6A Power Supply
- A Laser/LED Enable Sync Connect Cable
- A HDMI Type-C Video Input Cable and
- Two 75 mm flex to connect the panel
- One Quarter Wave Plate
- One Polarizing Plate
- Users Guide

Optional an additional Windows GUI software can be included as part of the above described programming option. This Windows software enables the user to control the different projection display settings very easily in a graphical environment and thus to try out the different configuration options during the technology evaluation/ product development.

## Contact Information

Dresden Microdisplay GmbH  
 Maria-Reiche-Str 2  
 D-01109 Dresden

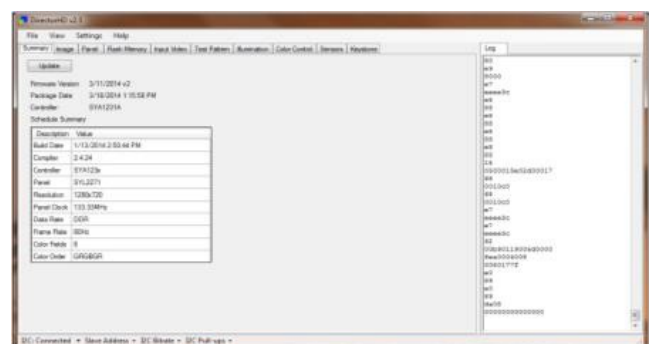
## Programming Option

- Windows GUI software
- Type A-to-Micro-B USB cable
- Support Documentation

## Optional Windows GUI SW



## Optional Windows GUI SW



Info@Microdisplay.biz  
 www.microdisplay.biz  
 +49 (351) 41 88 97 60